



19TH JAPANESE FALL FESTIVAL - SEPTEMBER 12-14

FRIDAY 5-10 PM SATURDAY 11 AM-10 PM SUNDAY 11 AM-6 PM

ADULTS \$7 CHILDREN \$3 AND WEEKEND PASSES AVAILABLE

**2400 S. SCENIC, SPRINGFIELD MO - NATHANIEL GREENE / CLOGG MEMORIAL PARK
IN THE MIZUMOTO JAPANESE STROLL GARDEN**



FOR MORE INFORMATION VISIT [WWW.JANM.ORG](http://www.janm.org) OR CALL 417-863-1000. FOLLOW US ON FACEBOOK, TWITTER AND INSTAGRAM.

Beginning a Robust Year of Education... with Ferguson in the Background

With many questions about how to start the year after the shooting death of a Michael Brown, a college-age young man in Ferguson, Missouri, the Division of Diversity and Inclusion (DDI) at MSU is all the more eager to impart education about race relations to the greater Springfield community. We have a devoted staff offering programs, services and trainings to students, staff, faculty and community members who want to learn about and live without fear of racial differences.

It is important to note that all the programs, services and trainings DDI, or anyone, can offer mean nothing without genuine will for reconciliation by participants. Some people drove for hours to visit the site where Michael Brown was slain. Others vowed their support and even participated in his funeral services. They were genuine, and DDI activities this year will follow suit by genuinely addressing the pieces and principles of our society that come together to create a situation like the one in Ferguson. We will also address pieces and principles that come together to help ensure that the Ferguson situation never happens in Springfield. There will be lots to enjoy and share with someone different from you and with someone just like you. But you must participate with a willing heart and a helping hand, or else all the work is futile, and our community gets closer to its day on CNN.

For starters, look for a revitalized Multicultural Resource Center (MRC). The MRC will bring loads of new heritage month programs, including one for Euro-American Heritage Month, and other developments that will bring community members to campus. We will provide a refreshed Youth Empowerment Conference (YES) and a Student Transition Education Program (STEP) to inspire our young people to new heights of citizenship and education.

In addition, the Office of the Vice President for Diversity and Inclusion (OVPDI) will present the 3rd Annual Statewide Collaborative Conference. This year's conference will feature a national authority on race relations, an international illusionist, a diversity fair, a mini-conference for students and a host of best-practice diversity presentations. The Diversity Fellows within the OVPDI will provide a community-wide video and education series... all year round. One of these will feature a true international exchange in September between participants and visitors from Abuja, Nigeria!

Race relations isn't the only focus of the DDI. This year we will support a new LGBT (Lesbian, Gay Bi-sexual and Trans-Gender) Center and on-going services for people with disabilities. Our work for both will be ensure that the campus and community remain safe places and increase in access for all.

We welcome members of both groups to campus and to participate in any event desired.

Truly we all must sincerely serve one another and prepare to do so with all our resources. Doing so ensures that ripples from unthinkable deaths such as Treyvon Martin and Michael Brown fade into a peaceful flow of engagements and solidarities that bind men and women into a common fold of family and friends. In wake of the national attention to race relations, we owe our finest effort for education and character development to those who seek answers, and to each other. DDI is looking forward to doing its share. Watch our website: <http://diversity.missouristate.edu/> to learn what will be happening and when. You are also requested to bring someone different from you when you come.

Let's integrate, collaborate and elevate... together!

Ken Coopwood, Sr., Ph.D. – “Dr. Coop”

Vice President for Diversity and Inclusion at Missouri State University

mes de la herencia **HISPANA**

Únase a la **Iglesia Cristiana Casa de Oración** y a la **Comunidad Latina** a celebrar el **Mes de la Herencia Hispana**.
Disfrute de auténtica comida hispana, Mariachi Herencia Mexicana de Jalisco, hermosos bailes típicos de varios países de habla hispana, y mucho más.

¡Venga y diviértase con **toda la familia**, les esperamos!

¡ENTRADA GRATUITA! - Venta de comida

"Lueva, truene o relampaguee"

Sábado, Septiembre 20 5:00 pm - 8:00 pm



3935 W. Sunshine
Springfield, MO.
Facebook.com/MHHICCO



BARTLEY- DECATUR NEIGHBORHOOD CENTER

Building Dreams, Nurturing Community

The Bartley-Decatur Neighborhood Center Community Room is available to rent for your next event (reception, baby shower, business meeting, workshop, or small dinner ... seating for up to 40 persons). The rates are \$35/hour or \$150/full day (or as negotiated). We are located at 918 E. Calhoun in Springfield. Let us know if we can be of service to you! Just call Mark at (417) 987-9939



La Fuerza Financiera Empieza Con Buenas Raices.



MEMBER
FDIC

EQUAL
HOUSING
LENDER



Empire Bank
Member Central Bancompany

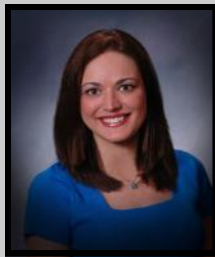
417.881.3100 | www.empirebank.com

Cuando se lesione...

- **Accidentes Automovilísticos
- **Indemnización Laboral
- **Caídas y Resbalones
- **Infracciones de tránsito
- **Se Habla Español

No se cobra honorarios o gastos a menos que se gane el caso.
(Esto no aplica para las infracciones de tránsito.)

CONSULTA GRATIS



Newman Law Firm

John O. Newman
Jennifer L. Newman
415-A East Chestnut Expressway,
Springfield, MO 65802
417-890-9829
1-800-586-3429

Escoger un abogado es una decisión importante y no debe basarse solamente en anuncios publicitarios

Jim Austin
Attorney
Austin & Ferguson, L.L.C.
Kansas City, MO

(816) 356-7100 Fax: 816-356-7110
E-mail: jim@austinferguson.com

Providing Comprehensive Immigration Services to Individuals & Businesses, Immigration & Naturalization Law, Complete Immigration Services, Aggressive Removal Defense & Complex Case Services

For all your insurance needs.

Call for a free quote.



Se habla español

Luis F Sarmiento Agency
1501 E Sunshine St
Springfield, MO 65804-1244
(417) 889-1907
(417) 883-0282 Fax
www.lsarmientoagency.com



Company and its Subsidiaries
American Family Insurance Company
Home Office - Madison, WI 53783

BC-224176 - 1/12

BARTLEY- DECATUR NEIGHBORHOOD CENTER

Building Dreams, Nurturing Community

SE ALQUILA SALÓN DE EVENTOS

918 E. Calhoun, Springfield, MO 65802. A unas cuadras de la universidad OTC.

Para baby showers, despedidas de soltera, cumpleaños y reuniones varias. Cupo de 40 personas con cocina aparte. Un interior elegante y funcional.

\$35 por hora ó \$150 el día entero.

Para más información y visita a las instalaciones, llame a Mark Dixon al

417-989-9939



Distinctive Mission,
Remarkable Education

Affordable Choice,
Unbentable Value

Memorable Experiences,
Lifetime Success

Missouri State University is currently recruiting diverse staff and faculty to add to the growing University system.

www.missouristate.edu/jobs
Vacancy recording: 417-836-4683

Successful candidates must be committed to working with diverse student and community populations.

Missouri State
UNIVERSITY

Employment will require a criminal background check at University expense.

Equal Opportunity/Affirmative Action Institution